

Available online at www.sciencedirect.com

ScienceDirect

journal homepage: <http://www.elsevier.com/locate/repbio>

Review

Mechanisms linking bacterial infections of the bovine endometrium to disease and infertility[☆]



Luísa Cunha Carneiro^{a,b}, James Graham Cronin^a, Iain Martin Sheldon^{a,*}

^aInstitute of Life Science, Swansea University Medical School, Singleton Park, Swansea SA2 8PP, United Kingdom

^bFaculty of Agricultural and Veterinary Science, Universidade Estadual Paulista, Jaboticabal, Brazil

ARTICLE INFO

Article history:

Received 14 July 2015

Received in revised form

24 November 2015

Accepted 5 December 2015

Available online 23 December 2015

Keywords:

Cow

Endometritis

Cytolysis

Innate immunity

Uterus

ABSTRACT

Bacterial infections of the endometrium after parturition commonly cause metritis and endometritis in dairy cattle, and these diseases are important because they compromise animal welfare and incur economic costs, as well as delaying or preventing conception. Here we highlight that uterine infections cause infertility, discuss which bacteria cause uterine disease, and review the evidence for mechanisms of inflammation and tissue damage in the endometrium. Bacteria cultured from the uterus of diseased animals include *Escherichia coli*, *Trueperella pyogenes*, and several anaerobic species, but their causative role in disease is challenged by the discovery of many other bacteria in the uterine disease microbiome. Irrespective of the species of bacteria, endometrial cell inflammatory responses to infection initially depend on innate immunity, with Toll-like receptors binding pathogen-associated molecular patterns, such as lipopolysaccharide and bacterial lipopeptides. In addition to tissue damage associated with parturition and inflammation, endometrial cell death is caused by a cholesterol-dependent cytolysin secreted by *T. pyogenes*, called pyolysin, which forms pores in plasma membranes of endometrial cells. However, endometrial cells surprisingly do not sense damage-associated molecular patterns, but a combination of infections followed by cell damage leads to release of the intracellular cytokine interleukin (IL)-1 alpha from endometrial cells, which then acts to scale inflammatory responses. To develop strategies to limit the impact of uterine disease on fertility, future work should focus on determining which bacteria and virulence factors cause endometritis, and understanding how the host response to infection is regulated in the endometrium.

© 2015 Society for Biology of Reproduction & the Institute of Animal Reproduction and Food Research of Polish Academy of Sciences in Olsztyn. Published by Elsevier Sp. z o.o. All rights reserved.

[☆] This paper has been given as a lecture at the International Conference on Biology and Pathology of Reproduction in Domestic Animals, “Endometritis as a cause of infertility in domestic animals”, held on September 28th–30th, 2015 Gdansk, Poland.

* Corresponding author. Tel.: +44 1792 602709.

E-mail address: i.m.sheldon@swansea.ac.uk (I.M. Sheldon).

<http://dx.doi.org/10.1016/j.repbio.2015.12.002>

1642-431X/© 2015 Society for Biology of Reproduction & the Institute of Animal Reproduction and Food Research of Polish Academy of Sciences in Olsztyn. Published by Elsevier Sp. z o.o. All rights reserved.

1. Introduction

Bacterial infections of the uterus cause disease and infertility in dairy cattle, particularly after parturition, when they lead to metritis and endometritis in up to 40% of animals [1]. These postpartum uterine diseases are important because they compromise animal welfare, and incur costs for treatment, reduced milk production, and replacement of infertile animals; €1.4 billion every year in the EU alone [2]. Here we address the question of how infections of the endometrium are linked to disease and infertility. We highlight the impact of uterine disease on fertility, then discuss which bacteria cause disease, and finally assimilate recent evidence about the mechanisms of inflammation and tissue damage in the endometrium.

2. Bacterial infections of the uterus cause infertility

In a meta-analysis of more than 10,000 animals, postpartum metritis increased the time to first insemination by 7.2 days, reduced conception rate to first insemination by 20%, and increased the calving to conception interval by 18.6 days [3]. Similarly, clinical endometritis increased the interval to first insemination by 11 days, and delayed conception by 32 days, compared with animals that did not have endometritis [4]. Cows with clinical endometritis between 20 and 33 days post partum were also 1.7 times more likely to be culled for reproductive failure than cows without endometritis [5]. Furthermore, infertility could be due to the endometrial inflammation in postpartum cattle infected with *Trueperella pyogenes* [6]. Together, these observations linking bacterial infections of the uterus with infertility provide an impetus to discover the underlying mechanisms. Evidence for how uterine disease impacts ovarian and neuroendocrine function have been reviewed recently [7]. So, the objective of the present review is to focus on the uterus.

3. Microbial infections of the postpartum uterus

From a historical perspective, microbial disease of the uterus of cattle merited little comment 80 years ago, and endometritis was not considered a common problem. However, between 1960 and 2000, endometritis in cattle started to be the subject of investigations to understand the pathogenesis of the disease and to select the most effective treatments. In one study, 93% of the uteri obtained within 15 days of calving yielded bacteria on aerobic and anaerobic culture of endometrial swabs and tissue [8]. The proportion of uteri from which bacteria were isolated had declined to 78% by 16–30 days, 50% by 31–45 days, and 9% by 46–60 days postpartum. Similar proportions of animals yielded culturable bacteria in subsequent studies [9,10]. However, the situation is more complicated because the bacterial flora fluctuates during the first 7 weeks postpartum due to spontaneous contamination, clearance and recontamination [11]. Furthermore, which bacterial isolates are contaminants of the uterus and which are pathogens is open to debate. Uterine infection was most commonly associated with the presence of *Escherichia coli*, *T. pyogenes*, *Fusobacterium necrophorum*, and *Prevotella* or *Bacteroides* species in studies spanning from the 1960s to the 1990s [8,10–12]. In the last 15 years, studies using aerobic and anaerobic culture methods provided similar evidence to the earlier investigations [9,13–15]. These bacteria were identified by standard culture techniques and are classified into pathogens, potential pathogens and opportunist contaminants (Table 1). In particular, *T. pyogenes* is linked to the severity of endometrial pathology and clinical disease [10,14,16]. Furthermore, *T. pyogenes*, *F. necrophorum* and *Prevotella* species can act synergistically to increase the likelihood of endometritis and the severity of disease [17,18]. Associations between uterine disease and bacteria that are not readily cultured by standard techniques emerged recently as researchers started to use biochemical, molecular and sequencing techniques [19–23]. These studies have provided

Table 1 – Categorization of bacteria, isolated by aerobic and anaerobic culture of uterine swabs, based on their potential pathogenicity [8–14,17,18]. Categories: (1) pathogens known to cause endometrial lesions; (2) potential uterine pathogens; and (3) bacteria not recognized as uterine pathogens that are likely contaminants of the uterine lumen.

Pathogens	Potential pathogens	Contaminants
<i>Escherichia coli</i>	<i>Acinetobacter</i> spp.	<i>Aerococcus viridans</i>
<i>Trueperella pyogenes</i>	<i>Bacillus licheniformis</i>	<i>Clostridium butyricum</i>
<i>Prevotella</i> spp.	<i>Enterococcus faecalis</i>	<i>Clostridium perfringens</i>
	<i>Haemophilus somnus</i>	
<i>Fusobacterium necrophorum</i>	<i>Mannheimia haemolytica</i>	<i>Corynebacterium</i> spp.
<i>Fusobacterium nucleatum</i>	<i>Pasteurella multocida</i>	<i>Enterobacter aerogenes</i>
	<i>Peptostreptococcus</i> spp.	<i>Klebsiella pneumoniae</i>
	<i>Staphylococcus aureus</i> (coagulase +)	<i>Micrococcus</i> spp.
	<i>Streptococcus uberis</i>	<i>Providencia rettgeri</i>
	<i>Bacteroidetes</i> species	<i>Providencia stuartii</i>
	<i>Firmicutes</i> species	<i>Proteus</i> spp.
	<i>Fusobacteria</i> species	<i>Propionibacterium granulosa</i>
		<i>Staphylococcus</i> species
		α -haemolytic <i>Streptococci</i>
		<i>Streptococcus acidominimus</i>

some contention in the field. Whilst some of the studies found *E. coli*, *T. pyogenes* and the expected anaerobic bacteria; others, surprisingly, found no evidence from their molecular analyses that *E. coli* or *T. pyogenes* cause uterine disease but rather reported finding other *Fusobacteria* species, *Bacteroidetes* and *Firmicutes* (Table 1). Gaps in knowledge remain about the relative contribution of culturable compared with “unculturable” bacteria to uterine disease, and synergistic interactions between *E. coli* or *T. pyogenes* and other bacteria. A consistent finding among most molecular microbiology studies is that anaerobic bacteria are abundant in diseased uteri [19,20]. Perhaps this is not surprising as the endometrium is a microaerophilic environment, and tissue damage and necrosis likely reduce the oxygen tension further, as well as the endometrium providing nutrients to facilitate bacterial growth. Indeed, the risk factors most frequently associated with uterine infection are stillbirth, twins, dystocia, cesarean section operation, and particularly retained fetal membranes [24-27].

Direct links between microbes and uterine disease remain to be explored, especially for unculturable microbes. However, an experimental vaccine containing components of *E. coli*, *F. necrophorum* and *T. pyogenes*, prevented metritis in dairy cows [28]. Furthermore, infusion of *E. coli* and *T. pyogenes* into the

uterus of naive cows induces endometritis [29,30]. So, taking the combined evidence for *E. coli* and *T. pyogenes* playing roles in postpartum uterine disease in dairy cattle, we will focus on these two microbes (Fig. 1).

3.1. *Escherichia coli*

It was assumed that *E. coli* isolated from the uterine lumen was associated with fecal contamination of the uterus during parturition, even though the level of fecal contamination on farms did not affect the uterine microbiome or severity of endometritis [12,27]. However, molecular typing techniques found that uterine disease is associated with phylogenetic clusters of *E. coli* [31,32]. These endometrial pathogenic *E. coli* (EnPEC) tend to be phylogenetically distant from the majority of extra-intestinal pathogenic *E. coli* (ExPEC), and more closely related to human intestinal pathogens [33]. However, the EnPEC have acquired, via horizontal transfer, DNA encoding iron acquisition systems and a virulence plasmid, similar to that found in several ExPECs. On the other hand, EnPEC have few virulence factors typical of enteric *E. coli*, although they possess the gene encoding the *FimH* adhesion factor, and *FimH* fosters adhesion of EnPEC to endometrial cells [31,32]. Beyond adhesion, EnPEC exploit cellular microfilaments and microtubules to

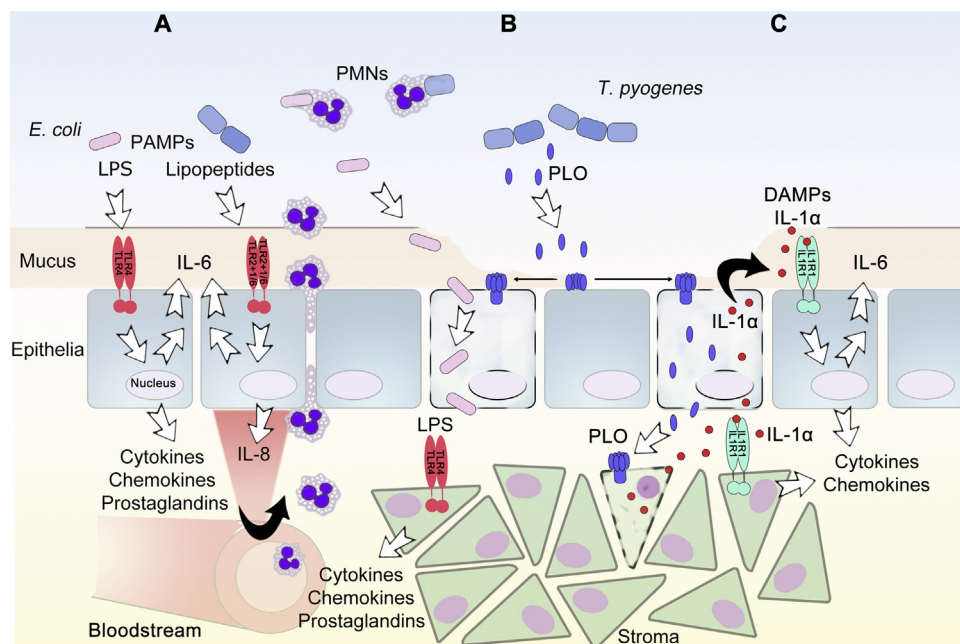


Fig. 1 – Mechanisms of pathology in the postpartum endometrium. Uterine infection is commonly associated with the presence of Gram-negative *E. coli*, and Gram-positive *T. pyogenes* and anaerobes. (A) Pattern recognition receptors, such as the Toll-like receptor (TLR) family, on endometrial cells detect pathogen-associated molecular patterns (PAMPs), leading to the secretion of cytokines, such as IL-1 β , IL-6 and IL-10, chemokines, such as IL-8 and CCL5, and prostaglandin E₂. Chemokines attract neutrophils and macrophages to the site of infection, where they are regulated by cytokines such as IL-6. (B) The cholesterol-dependent cytolysin – pyolysin (PLO) is secreted as a monomeric protein from *T. pyogenes*, and inserts into cholesterol-rich lipid rafts in the plasma membrane of host cells, forming pores that lead to osmotic cell death. Loss of the protective epithelium, often through damage incurred during parturition or from PLO, allows bacterial access to the underlying stromal cells. The stromal cells are more sensitive to pyolysin-mediated cytolysis as their plasma membrane contains more cholesterol than epithelial cells. In addition, activation of TLRs on stromal cell induces further production of cytokines and chemokines. (C) Following infection, damaged epithelial or stromal cells release the damage-associated molecular patterns (DAMPs) IL-1 α , which signal through the cognate receptor IL-1R1 on epithelial and stromal cells to scale the inflammatory response.

invade endometrial cells [31]. Of course, like all Gram-negative bacteria, lipopolysaccharide (LPS, endotoxin) is a principal component of the bacterial cell wall of EnPEC, and is an important virulence factor [31].

3.2. *Trueperella pyogenes*

T. pyogenes has undergone several name changes in the last 60 years, from *Corynebacterium pyogenes*, via *Actinomyces pyogenes* and *Arcanobacterium pyogenes*, to *T. pyogenes* [34]. *T. pyogenes* is consistently associated with the severity of postpartum endometritis in cattle [14,16,22], and causes uterine disease when infused into the uterus of cattle [30,35]. Unlike the diverse strains of *E. coli*, uterine isolates of *T. pyogenes* are phylogenetically similar [30]. Although, there is some variation in expression of virulence factors, including: neuraminidases *nanH* and *nanP*, which cleave sialic acids from host molecules, exposes host cell receptors for increased adhesion, and reduce mucus viscosity [36–38]; the collagen-binding protein *cbpA*, which binds to collagen types I, II and IV, and promotes adhesion to collagen-rich tissues; and *fimA*, required for fimbrial biogenesis and attachment of *T. pyogenes* to mucosal surfaces [36–38].

However, the most striking finding is that the *plo* gene is expressed ubiquitously by all isolates of *T. pyogenes* [30,36,37]. The *plo* gene encodes a cytolysin, pyolysin, which is the virulence factor thought to be responsible for much of the pathology associated with *T. pyogenes* infections, including mastitis in cattle, and abscesses in pigs, goats, cattle and mice [38,39]. The *plo* gene sequence is identical and the *plo* gene promoter is highly similar amongst uterine isolates of *T. pyogenes* [30]. Pyolysin is a cholesterol-dependent cytolysin, which is secreted as a monomeric protein by *T. pyogenes* [38,39]. Lipid rafts are membrane microdomains that are enriched in cholesterol, sphingomyelin, sphingolipids and phospholipids, and pyolysin inserts into these cholesterol-rich domains in the plasma membrane of host cells, and then pyolysin aggregates to form 30 nm diameter pores, leading to osmotic cell death (Fig. 1). Surprisingly, bovine endometrial stromal cells are more sensitive to pyolysin-mediated cytolysis than epithelial cells, neutrophils, monocytes or lymphocytes [30]. The sensitivity of stromal cells to pyolysin provides an explanation for how *T. pyogenes* causes cytolysis in the endometrium, once the protective epithelium is lost after parturition. Furthermore, loss of the epithelium likely allows the bacterium to transit from a commensal state to act as a pathogen. The sensitivity of endometrial stromal cells to pyolysin may be because stromal cells contain more cholesterol than epithelial cells [30]. Indeed, if stromal cell cholesterol content is reduced using methyl- β cyclodextrin, the stromal cells become as resistant to pyolysin as endometrial epithelial cells [30,40]. Similarly, the dynamin inhibitor Dynasore, which inhibits endocytosis from the plasma membrane, also reduces endometrial cell cholesterol and disperses plasma membrane lipid rafts, which protects against pyolysin [40]. In addition to changes in plasma membrane cholesterol, the physical properties of cell membranes and the shape of cells may be modulated. For example, Dynasore destabilizes and remodels F-actin, which may influence the distribution of cholesterol in plasma membranes and membrane biophysical properties

[41]. However, further work is needed to determine the specific protective effects in endometrial cells.

4. Immunity, inflammation and tissue damage

As well as tissue damage associated with parturient problems, and the cell death caused by bacterial pore-forming toxins, much of the pathology in the postpartum endometrium is a consequence of the host innate immune response to bacteria.

4.1. Innate immunity in the endometrium

The innate immune response is predicated on cellular pattern recognition receptors that bind pathogen-associated molecular patterns (PAMPs), which are components of microbes but not eukaryotic cells [42]. Evidence for pattern recognition receptors was first uncovered using *Drosophila melanogaster*, where Toll was found to be required for protection against fungal infection [43]. The first functional mammalian Toll-like receptor (TLR) was identified in mutant mice, where TLR4 receptor (TLR) was identified in mutant mice, where TLR4 receptor protected against infection with Gram-negative bacteria by recognizing LPS [44]. A range of pattern recognition receptors have now been discovered, with some expressed on the surface of hematopoietic immune cells, whilst others are located in the cytoplasm [42]. Binding of PAMPs to pattern recognition receptors induces intracellular signaling, often including mitogen-activated protein kinases and nuclear factor kappa B, leading to the secretion of cytokines such as interleukin (IL)-1 β and IL-6, chemokines such as IL-8, prostaglandins, and antimicrobial peptides [42].

Pattern recognition receptors are not only present in hematopoietic immune cells, but also in endometrial epithelial and stromal cells. Bovine endometrial cells use TLR4 to sense LPS, and TLR1, TLR2 and TLR6 to detect bacterial lipopeptides, leading to the secretion of interleukin (IL)-8, IL-6 and prostaglandin E₂ (Fig. 1) [45–48]. These *in vitro* responses mimic the effect of EnPEC and *T. pyogenes* on *ex vivo* organ cultures of endometrium, which stimulates the accumulation of IL-8 and IL-6, as well as IL-1 β [49,50]. In addition, prostaglandin E₂ is more abundant in animals with uterine disease, and changes in prostaglandin secretion might impact the physiological control of ovarian function [48]. The *in vitro* inflammatory responses by endometrial cells also reflect increased abundance of genes encoding inflammatory mediators in endometrium collected from animals with uterine disease. The upregulated genes in diseased endometrium, or in cytology samples collected from the endometrium, include cytokines such as *IL1A*, *IL1B* and *IL6*; chemokines such as *CXCL5* and *CXCL8*; and antimicrobial peptides such as *TAP*, *DEFB5* and *DEFB1* [51–55]. However, metabolic deficits after parturition, often termed “negative energy balance”, may perturb immunity and the ability to clear microbes from the endometrium [56].

Chemokines, such as IL-8 (encoded by the *CXCL8* gene), attract neutrophils and macrophages to the site of infection or tissue damage, where these hematopoietic cells are regulated by cytokines, such as IL-6 [57]. In the postpartum uterus the epithelium is often disrupted, with migration of neutrophils and macrophages through the stroma (Fig. 1). However, it is

interesting to note that IL-6 is only secreted apically by the polarized epithelial cells of a confluent epithelium *in vitro* [58]. Presumably, IL-6 is secreted apically into the uterine lumen to ensure immune cells are only exposed to IL-6 once they reach the lumen, unless the epithelium is breached. Furthermore, a confluent epithelium also protects the underlying stroma from PAMPs, and from bacterial toxins such as pyolysin [58].

4.2. Tissue damage and inflammation in the endometrium

The “danger hypothesis” extends the role of innate immunity to suggest that cells also use pattern recognition receptors to sense and respond to signals from damaged tissues [59,60]. Damage-associated molecular patterns (DAMPs) are released into the extracellular fluid by damaged or necrotic cells, or from the extracellular matrix [59,60]. In a similar manner to the responses to PAMPs, DAMPs such as the nuclear protein high molecular group box 1 (HMGB1) are released by necrotic cells or activated macrophages, and bind to receptors including TLRs to stimulate inflammation [61,62]. Hyaluronan is an example of an extracellular matrix DAMP produced during tissue damage, which stimulates inflammation via TLR2 and TLR4 [63]. As there is considerable tissue damage in the postpartum endometrium, it was surprising that bovine endometrial cells or mononuclear cells did not respond to HMGB1 or a range of different molecular weights of hyaluronan [64]. Instead, the endometrium exploits an alternative danger-sensing mechanism. Damaged cells passively release the intracellular cytokine IL-1 α [65,66]; and, endometrial cells release IL-1 α protein if there is a combination of exposure to bacteria, or bacterial PAMPs, followed by cell damage (Fig. 1) [64]. In turn, IL-1 α binds the cognate IL-1R on adjacent endometrial cells to stimulate the production of inflammatory mediators such as IL-6. Thus, IL-1 α scales the inflammatory response in the endometrium when there is infection followed by cell damage. This mechanism makes biological sense, as the intensity of the inflammatory response in a tissue should match the severity of the challenge [67].

5. Prospects

The rise in incidence and economic impact of postpartum uterine disease in dairy cattle over the last 40 years was unexpected, and few of the discoveries about endometritis discussed in the present review were predictable even 20 years ago. Although, a remaining open question is the role of unculturable bacteria, the main pathogens were identified by culture and recent evidence shows that they are well adapted to the endometrium. The role of innate immunity for sensing and responding to pathogen-associated molecular patterns in endometritis is now clearly established. We have also uncovered IL-1 α as a key damage-associated molecular pattern, when there is damage and infection of the endometrium. Finally, there is emerging evidence for the role of virulence factors, such as the pore-forming toxin pyolysin. Future work should focus on determining which bacteria and virulence factors cause endometritis, and understanding how the host response to infection is regulated in the endometrium. New knowledge about postpartum uterine disease will provide a platform for new therapeutics and vaccines.

Author contributions

All authors contributed to the writing of the manuscript, and all authors approved the final version.

Conflict of interest statement

The authors have nothing to disclose.

Acknowledgements

MS was supported by the UK Biotechnology and Biological Sciences Research Council (BBSRC, grant number K006592/1). LC was supported by the Brazilian Federal Agency for the Support and Evaluation of Graduate Education (CAPES).

REFERENCES

- [1] Sheldon IM, Lewis GS, LeBlanc S, Gilbert RO. Defining postpartum uterine disease in cattle. *Theriogenology* 2006;65(8):1516–30.
- [2] Sheldon IM, Cronin J, Goetze L, Donofrio G, Schuberth HJ. Defining postpartum uterine disease and the mechanisms of infection and immunity in the female reproductive tract in cattle. *Biol Reprod* 2009;81:1025–32.
- [3] Fourichon C, Seegers H, Malher X. Effect of disease on reproduction in the dairy cow: a meta-analysis. *Theriogenology* 2000;53(9):1729–59.
- [4] Borsberry S, Dobson H. Periparturient diseases and their effect on reproductive performance in five dairy herds. *Vet Rec* 1989;124(9):217–9.
- [5] LeBlanc SJ, Duffield TF, Leslie KE, Bateman KG, Keefe GP, Walton JS, et al. Defining and diagnosing postpartum clinical endometritis and its impact on reproductive performance in dairy cows. *J Dairy Sci* 2002;85(9):2223–36.
- [6] Bonnett BN, Martin SW. Path analysis of peripartum and postpartum events, rectal palpation findings, endometrial biopsy results and reproductive performance in Holstein-Friesian dairy cows. *Prev Vet Med* 1995;21:279–88.
- [7] Sheldon IM, Cronin JG, Healey GD, Gabler C, Heuwieser W, Streyll D, et al. Innate immunity and inflammation of the bovine female reproductive tract in health and disease. *Reproduction* 2014;148(3):R41–51.
- [8] Elliott L, McMahon KJ, Gier HT, Marion GB. Uterus of the cow after parturition: bacterial content. *Am J Vet Res* 1968;29(1):77–81.
- [9] Sheldon IM, Noakes DE, Rycroft AN, Pfeiffer DU, Dobson H. Influence of uterine bacterial contamination after parturition on ovarian dominant follicle selection and follicle growth and function in cattle. *Reproduction* 2002;123:837–45.
- [10] Huszenicza G, Fodor M, Gacs M, Kulcsar M, Dohmen MJW, Vamos M, et al. Uterine bacteriology, resumption of cyclic ovarian activity and fertility in postpartum cows kept in large-scale dairy herds. *Reprod Domest Anim* 1991;34:237–45.
- [11] Griffin JFT, Hartigan PJ, Nunn WR. Non-specific uterine infection and bovine fertility, I. Infection patterns and endometritis during the first seven weeks post-partum. *Theriogenology* 1974;1(3):91–106.

- [12] Noakes DE, Wallace L, Smith GR. Bacterial flora of the uterus of cows after calving on two hygienically contrasting farms. *Vet Rec* 1991;128:440-2.
- [13] Dohmen MJ, Joop K, Sturk A, Bols PE, Lohuis JA. Relationship between intra-uterine bacterial contamination, endotoxin levels and the development of endometritis in postpartum cows with dystocia or retained placenta. *Theriogenology* 2000;54(7):1019-32.
- [14] Westermann S, Drillich M, Kaufmann TB, Madoz LV, Heuwieser W. A clinical approach to determine false positive findings of clinical endometritis by vaginoscopy by the use of uterine bacteriology and cytology in dairy cows. *Theriogenology* 2010;74(7):1248-55.
- [15] Williams EJ, Fischer DP, England GCW, Dobson H, Pfeiffer DU, Sheldon IM. Clinical evaluation of postpartum vaginal mucus reflects uterine bacterial infection and the inflammatory response to endometritis in cattle. *Theriogenology* 2005;63(1):102-17.
- [16] Bonnett BN, Martin SW, Gannon VP, Miller RB, Etherington WG. Endometrial biopsy in Holstein-Friesian dairy cows. III. Bacteriological analysis and correlations with histological findings. *Can J Vet Res* 1991;55:168-73.
- [17] Olson JD, Ball L, Mortimer RG, Farin PW, Adney WS, Huffman EM. Aspects of bacteriology and endocrinology of cows with pyometra and retained fetal membranes. *Am J Vet Res* 1984;45:2251-5.
- [18] Ruder CA, Sasser RG, Williams RJ, Ely JK, Bull RC, Butler JE. Uterine infections in the postpartum cow: II. Possible synergistic effect of *Fusobacterium necrophorum* and *Corynebacterium pyogenes*. *Theriogenology* 1981;15(6):573-80.
- [19] Machado VS, Oikonomou G, Bicalho ML, Knauer WA, Gilbert R, Bicalho RC. Investigation of postpartum dairy cows' uterine microbial diversity using metagenomic pyrosequencing of the 16S rRNA gene. *Vet Microbiol* 2012.
- [20] Santos TM, Bicalho RC. Diversity and succession of bacterial communities in the uterine fluid of postpartum metritic, endometritic and healthy dairy cows. *PLoS ONE* 2012;7(12):e53048.
- [21] Peng Y, Wang Y, Hang S, Zhu W. Microbial diversity in uterus of healthy and metritic postpartum Holstein dairy cows. *Folia Microbiol (Praha)* 2013;58(6):593-600.
- [22] Wagener K, Prunner I, Pothmann H, Drillich M, Ehling-Schulz M. Diversity and health status specific fluctuations of intrauterine microbial communities in postpartum dairy cows. *Vet Microbiol* 2015;175(2-4):286-93.
- [23] Knudsen LR, Karstrup CC, Pedersen HG, Agerholm JS, Jensen TK, Klitgaard K. Revisiting bovine pyometra - new insights into the disease using a culture-independent deep sequencing approach. *Vet Microbiol* 2015;175(2-4):319-24.
- [24] Hussain AM, Daniel RCW, O'Boyle D. Postpartum uterine flora following normal and abnormal puerperium in cows. *Theriogenology* 1990;34(2):291-302.
- [25] Peeler EJ, Otte MJ, Esslemont RJ. Inter-relationships of periparturient diseases in dairy cows. *Vet Rec* 1994;134:129-32.
- [26] Markusfeld O. Factors responsible for post parturient metritis in dairy cattle. *Vet Rec* 1984;114:539-42.
- [27] Potter T, Guitian J, Fishwick J, Gordon PJ, Sheldon IM. Risk factors for clinical endometritis in postpartum dairy cattle. *Theriogenology* 2010;74:127-34.
- [28] Machado VS, Bicalho ML, Meira Junior EB, Rossi R, Ribeiro BL, Lima S, et al. Subcutaneous immunization with inactivated bacterial components and purified protein of *Escherichia coli*, *Fusobacterium necrophorum* and *Trueperella pyogenes* prevents puerperal metritis in Holstein dairy cows. *PLOS ONE* 2014;9(3): e91734.
- [29] Ayliffe TR, Noakes DE. Effects of exogenous oestrogen and experimentally induced endometritis on absorption of sodium benzylpenicillin from the cow's uterus. *Vet Rec* 1982;110(5):96-8.
- [30] Amos MR, Healey GD, Goldstone RJ, Mahan S, Duvel A, Schuberth HJ, et al. Differential endometrial cell sensitivity to a cholesterol-dependent cytolysin links *Trueperella pyogenes* to uterine disease in cattle. *Biol Reprod* 2014;90(54):1-13.
- [31] Sheldon IM, Rycroft AN, Dogan B, Craven M, Bromfield JJ, Chandler A, et al. Specific strains of *Escherichia coli* are pathogenic for the endometrium of cattle and cause pelvic inflammatory disease in cattle and mice. *PLoS ONE* 2010;5: e9192.
- [32] Bicalho RC, Machado VS, Bicalho ML, Gilbert RO, Teixeira AG, Caixeta LS, et al. Molecular and epidemiological characterization of bovine intrauterine *Escherichia coli*. *J Dairy Sci* 2010;93(12):5818-30.
- [33] Goldstone RJ, Popat R, Schuberth HJ, Sandra O, Sheldon IM, Smith DG. Genomic characterisation of an endometrial pathogenic *Escherichia coli* strain reveals the acquisition of genetic elements associated with extra-intestinal pathogenicity. *BMC Genomics* 2014;15:1075.
- [34] Yassin AF, Hupfer H, Siering C, Schumann P. Comparative chemotaxonomic and phylogenetic studies on the genus *Arcanobacterium* Collins et al. 1982 emend. Lehnen et al. 2006: proposal for *Trueperella* gen. nov. and emended description of the genus *Arcanobacterium*. *Int J Syst Evol Microbiol* 2011;61:1265-74.
- [35] Semambo DK, Ayliffe TR, Boyd JS, Taylor DJ. Early abortion in cattle induced by experimental intrauterine infection with pure cultures of *Actinomyces pyogenes*. *Vet Rec* 1991;129(1):12-6.
- [36] Silva E, Gaivao M, Leitao S, Jost BH, Carneiro C, Vilela CL, et al. Genomic characterization of *Arcanobacterium pyogenes* isolates recovered from the uterus of dairy cows with normal puerperium or clinical metritis. *Vet Microbiol* 2008;132(1-2):111-8.
- [37] Santos TM, Caixeta LS, Machado VS, Rauf AK, Gilbert RO, Bicalho RC. Antimicrobial resistance and presence of virulence factor genes in *Arcanobacterium pyogenes* isolated from the uterus of postpartum dairy cows. *Vet Microbiol* 2010;145(1-2):84-9.
- [38] Jost BH, Billington SJ. *Arcanobacterium pyogenes*: molecular pathogenesis of an animal opportunist. *Antonie van Leeuwenhoek* 2005;88(2):87-102.
- [39] Billington SJ, Jost BH, Cuevas WA, Bright KR, Songer JG. The *Arcanobacterium (Actinomyces) pyogenes* hemolysin, pyolysin, is a novel member of the thiol-activated cytolysin family. *J Bacteriol* 1997;179(19):6100-6.
- [40] Preta G, Lotti V, Cronin JG, Sheldon IM. Protective role of the dynamin inhibitor Dynasore against the cholesterol-dependent cytolysin of *Trueperella pyogenes*. *FASEB J* 2015;29(4):1516-28.
- [41] Preta G, Cronin JG, Sheldon IM. Dynasore - not just a dynamin inhibitor. *Cell Commun Signal* 2015;13:24.
- [42] Takeuchi O, Akira S. Pattern recognition receptors and inflammation. *Cell* 2010;140(6):805-20.
- [43] Lemaitre B, Nicolas E, Michaut L, Reichhart JM, Hoffmann JA. The dorsoventral regulatory gene cassette spatzle/Toll/cactus controls the potent antifungal response in *Drosophila* adults. *Cell* 1996;86(6):973-83.
- [44] Poltorak A, He X, Smirnova I, Liu MY, Huffer CV, Du X, et al. Defective LPS signaling in 384 C3H/HeJ and C57BL/10ScCr mice: mutations in *Tlr4* gene. *Science* 1998;282(5396):2085-3858.
- [45] Cronin JG, Turner ML, Goetze L, Bryant CE, Sheldon IM. Toll-like receptor 4 and MyD88-dependent signaling mechanisms of the innate immune system are essential for the response to lipopolysaccharide by epithelial and stromal cells of the bovine endometrium. *Biol Reprod* 2012;86(51):1-9.

- [46] Herath S, Fischer DP, Werling D, Williams EJ, Lilly ST, Dobson H, et al. Expression and function of Toll-like receptor 4 in the endometrial cells of the uterus. *Endocrinology* 2006;147:562-70.
- [47] Turner ML, Cronin JC, Healey GD, Sheldon IM. Epithelial and stromal cells of bovine endometrium have roles in innate immunity and initiate inflammatory responses to bacterial lipopeptides in vitro via Toll-like receptors TLR2, TLR1 and TLR6. *Endocrinology* 2014;155:1453-65.
- [48] Herath S, Lilly ST, Fischer DP, Williams EJ, Dobson H, Bryant CE, et al. Bacterial lipopolysaccharide induces an endocrine switch from prostaglandin F2 α to prostaglandin E2 in bovine endometrium. *Endocrinology* 2009;150:1912-20.
- [49] Borges AM, Healey GD, Sheldon IM. Explants of intact endometrium to model bovine innate immunity and inflammation ex vivo. *Am J Reprod Immunol* 2012;67:526-39.
- [50] Saut JP, Healey GD, Borges AM, Sheldon IM. Ovarian steroids do not impact bovine endometrial cytokine/chemokine responses to *E. coli* or LPS in vitro. *Reproduction* 2014;148:593-606.
- [51] Herath S, Lilly ST, Santos NR, Gilbert RO, Goetze L, Bryant CE, et al. Expression of genes associated with immunity in the endometrium of cattle with disparate postpartum uterine disease and fertility. *Reprod Biol Endocrinol* 2009;7(1):55.
- [52] Galvao KN, Santos NR, Galvao JS, Gilbert RO. Association between endometritis and endometrial cytokine expression in postpartum Holstein cows. *Theriogenology* 2011;76(2):290-9.
- [53] Gabler C, Fischer C, Drillich M, Einspanier R, Heuwieser W. Time-dependent mRNA expression of selected pro-inflammatory factors in the endometrium of primiparous cows postpartum. *Reprod Biol Endocrinol* 2010;8:152.
- [54] Fischer C, Drillich M, Odau S, Heuwieser W, Einspanier R, Gabler C. Selected pro-inflammatory factor transcripts in bovine endometrial epithelial cells are regulated during the oestrous cycle and elevated in case of subclinical or clinical endometritis. *Reprod Fertil Dev* 2010;22(5):818-29.
- [55] Chapwanya A, Meade KG, Doherty ML, Callanan JJ, Mee JF, O'Farrelly C. Histopathological and molecular evaluation of Holstein-Friesian cows postpartum: toward an improved understanding of uterine innate immunity. *Theriogenology* 2009;71(9):1396-407.
- [56] Wathes DC, Cheng Z, Chowdhury W, Fenwick MA, Fitzpatrick R, Morris DG, et al. Negative energy balance alters global gene expression and immune responses in the uterus of postpartum dairy cows. *Physiol Genomics* 2009;39(1):1-13.
- [57] Hurst SM, Wilkinson TS, McLoughlin RM, Jones S, Horiuchi S, Yamamoto N, et al. IL-6 and its soluble receptor orchestrate a temporal switch in the pattern of leukocyte recruitment seen during acute inflammation. *Immunity* 2001;14(6):705-14.
- [58] Healy LL, Cronin JG, Sheldon IM. Polarized epithelial cells secrete interleukin 6 apically in the bovine endometrium. *Biol Reprod* 2015;92(151):1-12.
- [59] Matzinger P. The danger model: a renewed sense of self. *Science* 2002;296(5566):301-5.
- [60] Chen GY, Nunez G. Sterile inflammation: sensing and reacting to damage. *Nat Rev Immunol* 2010;10(12):826-37.
- [61] Scaffidi P, Misteli T, Bianchi ME. Release of chromatin protein HMGB1 by necrotic cells triggers inflammation. *Nature* 2002;418(6894):191-5.
- [62] Tian J, Avalos AM, Mao SY, Chen B, Senthil K, Wu H, et al. Toll-like receptor 9-dependent activation by DNA-containing immune complexes is mediated by HMGB1 and RAGE. *Nat Immunol* 2007;8(5):487-96.
- [63] Jiang D, Liang J, Fan J, Yu S, Chen S, Luo Y, et al. Regulation of lung injury and repair by Toll-like receptors and hyaluronan. *Nat Med* 2005;11(11):1173-9.
- [64] Healy LL, Cronin JG, Sheldon IM. Endometrial cells sense and react to tissue damage during infection of the bovine endometrium via interleukin 1. *Sci Rep* 2014;4(7060):1-9.
- [65] Kim B, Lee Y, Kim E, Kwak A, Ryoo S, Bae SH, et al. The interleukin-1 alpha precursor is biologically active and is likely a key alarmin in the IL-1 family of cytokines. *Front Immunol* 2013;4:391.
- [66] Dinarello CA. Immunological and inflammatory functions of the interleukin-1 family. *Annu Rev Immunol* 2009;27:519-50.
- [67] Blander JM, Sander LE. Beyond pattern recognition: five immune checkpoints for scaling the microbial threat. *Nat Rev Immunol* 2012;12(3):215-25.