

CORRECTION

Open Access

Correction: Comparative chromosome mapping of repetitive sequences. Implications for genomic evolution in the fish, *Hoplias malabaricus*

Marcelo B Cioffi¹, Cesar Martins^{2*} and Luiz AC Bertollo¹

Correction

After the publication of this work [1] the following errors were brought to the authors' attention: Figure two contained a mistake that occurred during the editing process and karyotype assemblage so that two chromosome pairs (X_1 and X_2) were inadvertently duplicated in the karyotype of the female specimen - karyomorph D. The correct figure is given below (Figure 1).

The authors would like to apologise for any confusion caused by this mistake.

Received: 5 April 2013 Accepted: 5 April 2013
Published: 9 April 2013

References

1. Cioffi MB, Martins C, Bertollo LAC: Comparative chromosome mapping of repetitive sequences. Implications for genomic evolution in the fish, *Hoplias malabaricus*. *BMC Genet BMC Genetics* 2009, **10**:34.

doi:10.1186/1471-2156-14-24

Cite this article as: Cioffi et al.: Correction: Comparative chromosome mapping of repetitive sequences: implications for genomic evolution in the fish, *Hoplias malabaricus*. *BMC Genetics* 2013 **14**:24.

* Correspondence: cmartins@ibb.unesp.br

²Departamento de Morfologia, UNESP – Universidade Estadual Paulista, Instituto de Biociências, Botucatu, SP, Brazil

Full list of author information is available at the end of the article

Submit your next manuscript to BioMed Central and take full advantage of:

- Convenient online submission
- Thorough peer review
- No space constraints or color figure charges
- Immediate publication on acceptance
- Inclusion in PubMed, CAS, Scopus and Google Scholar
- Research which is freely available for redistribution

Submit your manuscript at
www.biomedcentral.com/submit



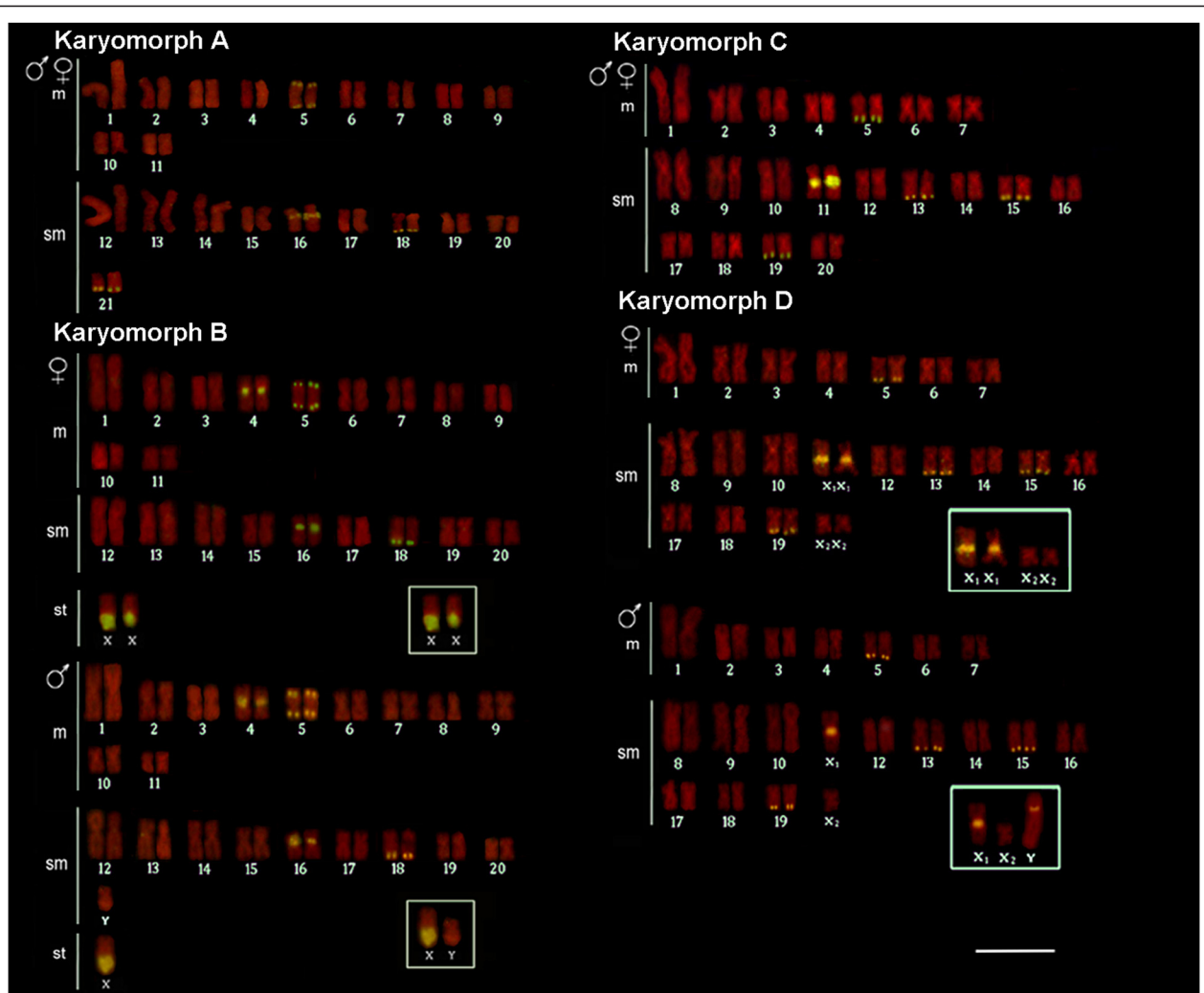


Figure 1 Karyotypes of *Hoplias malabaricus* (karyomorphs A-D) arranged from chromosomes probed with 18S rDNA (yellow signals) and counterstained with propidium iodide. The sex chromosomes of karyomorphs B and D are boxed. Bar = 5 μ m.